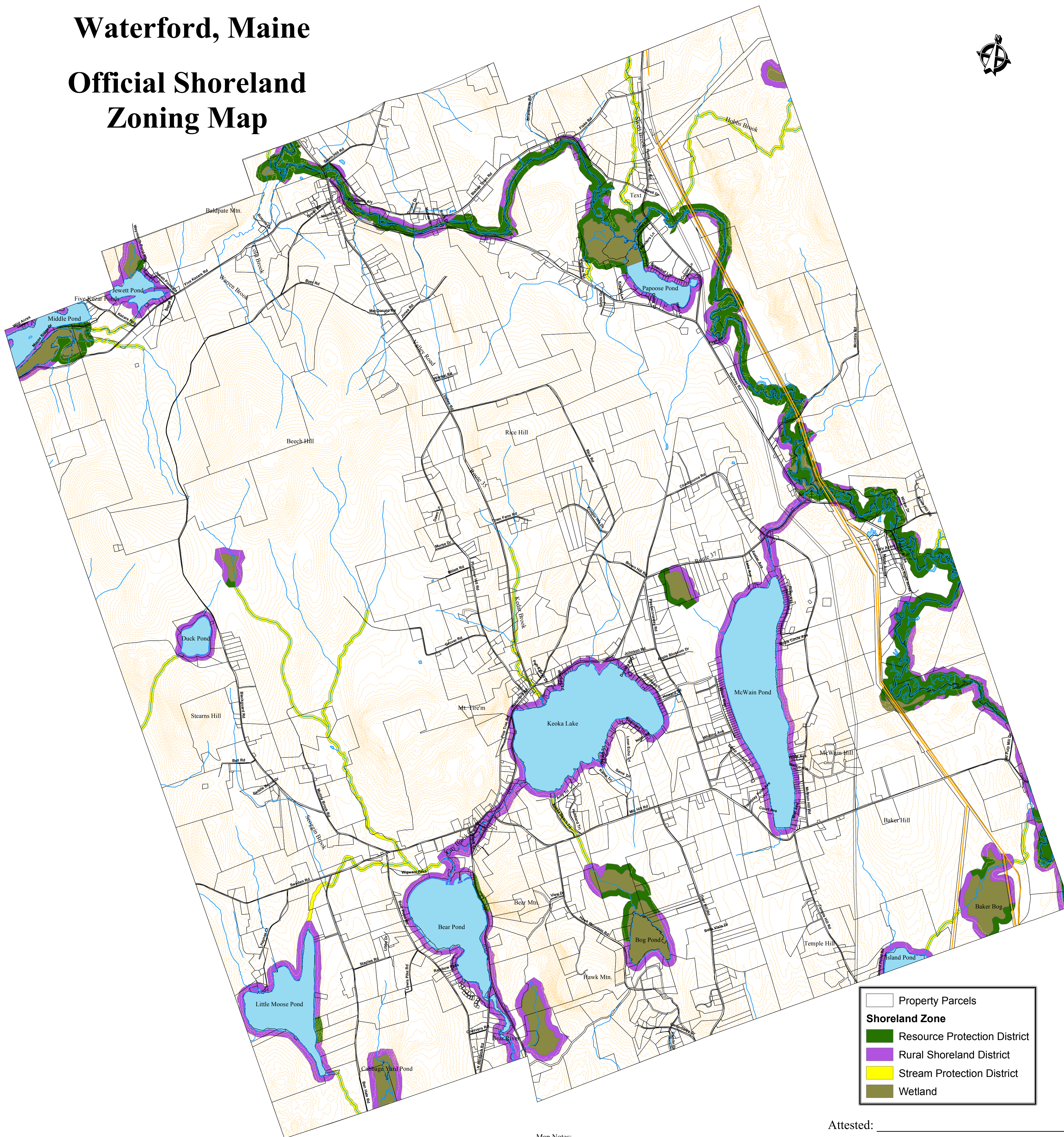
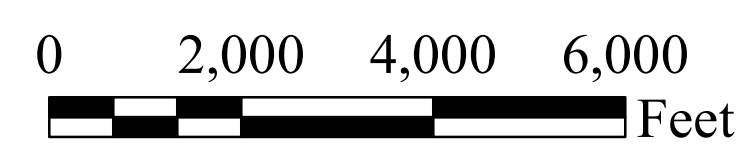


# Waterford, Maine Official Shoreland Zoning Map



	Property Parcels
<b>Shoreland Zone</b>	
	Resource Protection District
	Rural Shoreland District
	Stream Protection District
	Wetland

Adopted: March 7, 1992  
 Amended: March 1, 2003  
 Amended: March 6, 2004  
 Amended: March 6, 2010  
 Amended: March 5, 2016



Document Path: Y:\Waterford\Shoreland Zoning Ord\Waterford\_Shorelandzone\_03.28.16amend.mxd

**Map Notes:**

1. The depiction of the boundaries of the Shoreland Zones on this Official Shoreland Zoning Map is merely illustrative of their general location. The exact boundaries of the Shoreland Zone shall be determined by on-site inspection and measurement from the normal high water line or upland edge of the wetland.
2. Freshwater wetlands delineation based on the National Wetlands Inventory, prepared by the United States Department of the Interior, Fish and Wildlife Service.
3. May 30, 2012 Moderate or High Value Waterfowl & Wading Bird Habitat.
4. Property parcels-November 2012

Attested: \_\_\_\_\_

Date: \_\_\_\_\_  
 Town Clerk



Map by: John A. Maloney-03.28.16